

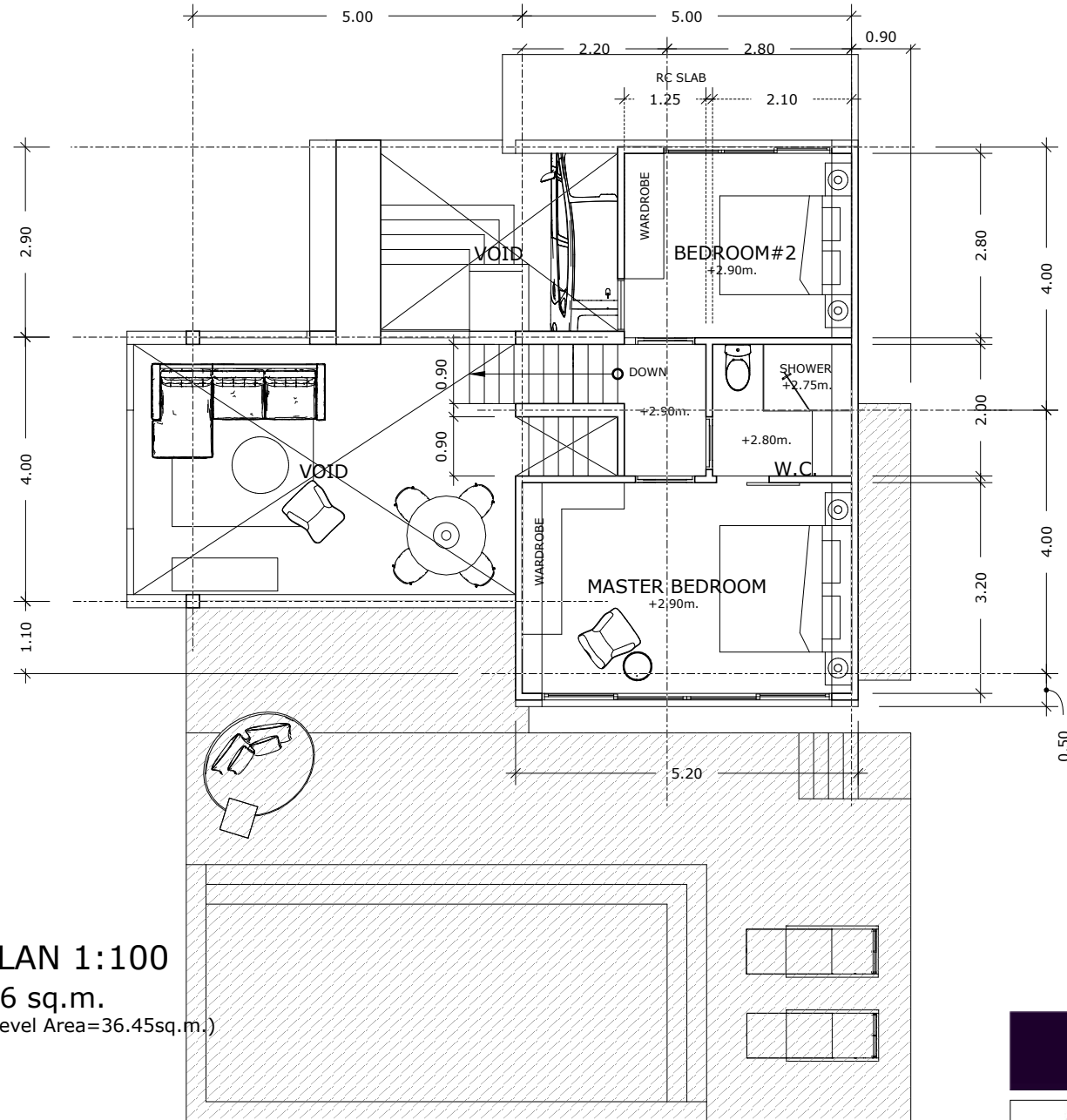
TYPE B

GROUND FLOOR PLAN 1:100

BUILT UP AREA=126 sq.m.

(Ground Level Area=89.55sq.m. + 2nd Level Area=36.45sq.m.)





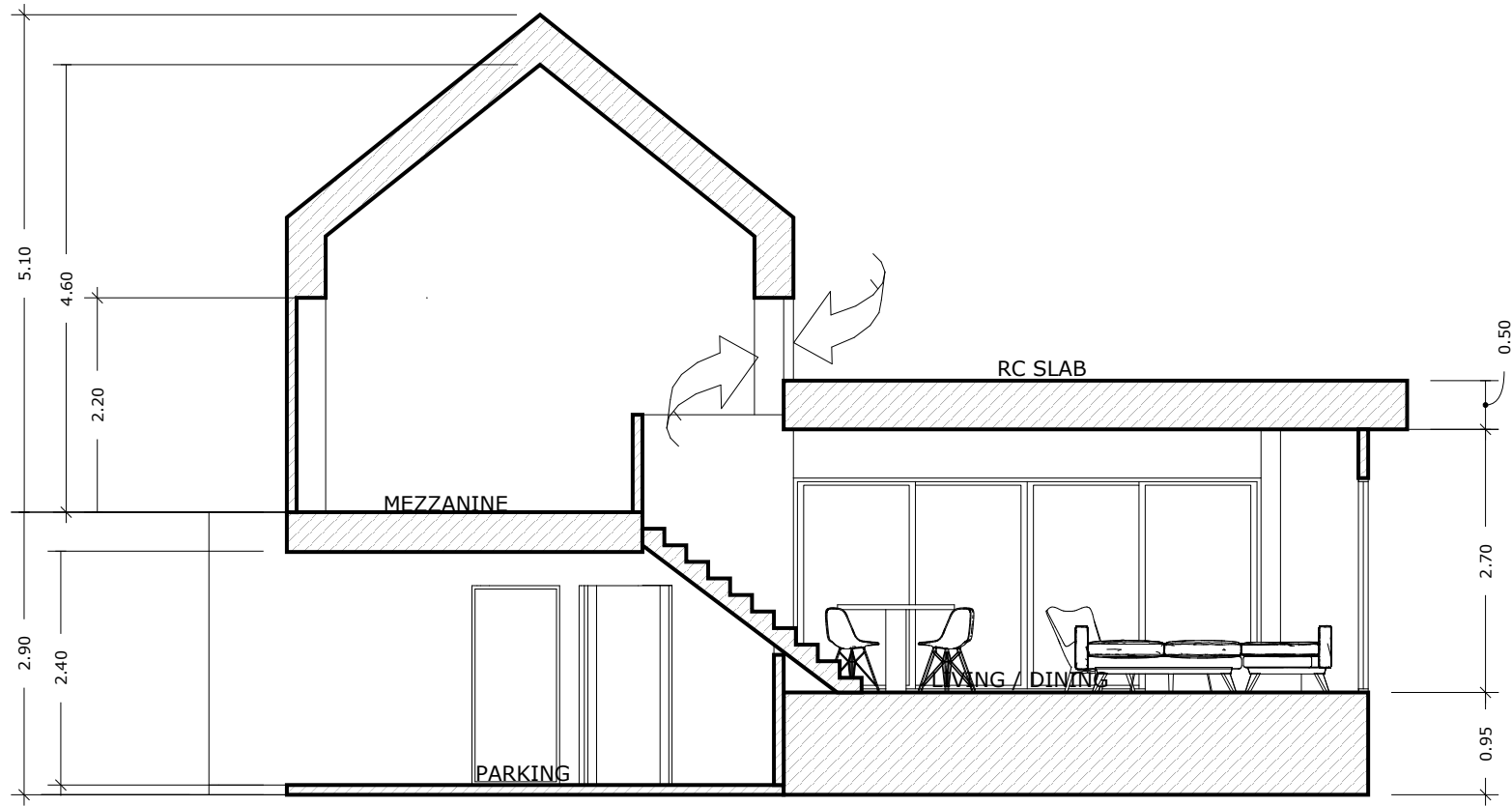
TYPE B

MEZZANINE FLOOR PLAN 1:100

BUILT UP AREA=126 sq.m.

(Ground Level Area=89.55sq.m. + 2nd Level Area=36.45sq.m.)





TYPE B
SECTION 1:75

